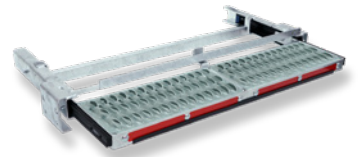


Steps

Retracts backwards
MPRRG
(New)



Fixed to chassis
MP



Fixed to tow bar
MPA100



Fixed to tow bar
MPA
MPAR



Lift-up step
MPLL
(New)



Fixed to tow bar
MPU
MPUG



Transport solutions for
commercial vehicles



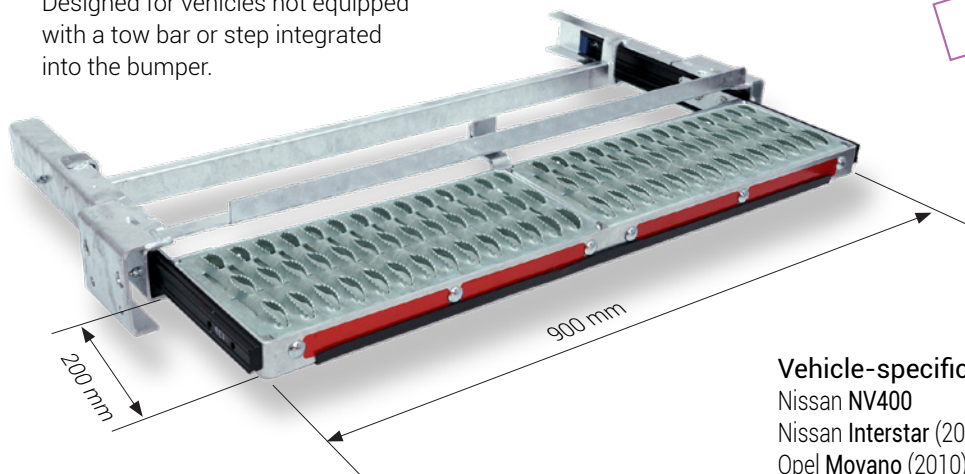
Retracts backwards

MRRG



Step that can be retracted backwards.
Fixed directly under the chassis with specific brackets for each vehicle type.

Designed for vehicles not equipped with a tow bar or step integrated into the bumper.



New

Vehicle-specific

Nissan NV400
Nissan Interstar (2022)
Opel Movano (2010)
Renault Master

- Platform 900 x 200 mm
- Structure and step in galvanised steel
- Load capacity of 150 kg



SO ME GR

See the different types of anti-slip surfaces on page 5.



Step MRRG, type Medium

- Platform 600 x 200 mm
- Structure and step in galvanised steel
- Load capacity of 150 kg



ME

Brackets for MRRG and MP for various chassis types

MRRG-1609
MP-1609



Nissan NV400
Nissan Interstar (2022)
Opel Movano (2010)
Renault Master

MRRG-0110
MP-0110



Citroën Jumper
Fiat Ducato
Opel Movano (2021)
Peugeot Boxer

MRRG-0430
MP-0430



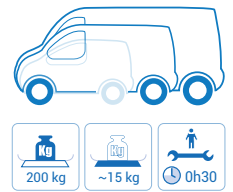
Ford Transit 2T

MP-2017



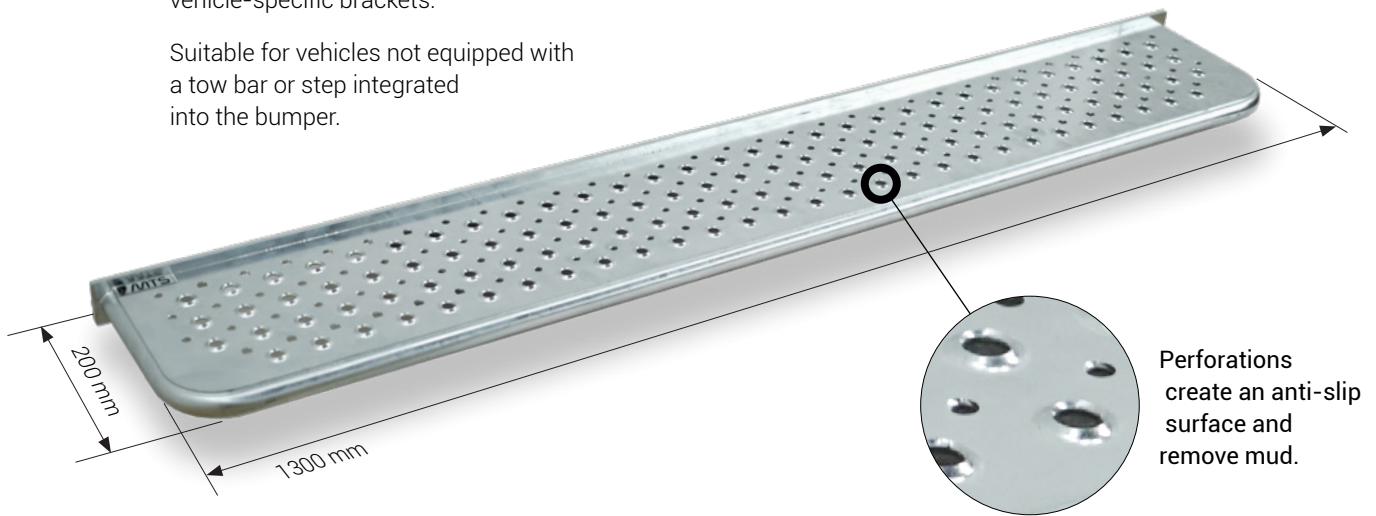
MAN TGE
VW Crafter

Fixed to chassis MP



Fitted directly to the vehicle chassis using vehicle-specific brackets.

Suitable for vehicles not equipped with a tow bar or step integrated into the bumper.



Perforations create an anti-slip surface and remove mud.

- Platform 1300 x 200 mm
- Structure and step in galvanised steel
- Load capacity of 200 kg



ME



MP-0116



Citroën Jumpy
Fiat Scudo (2022)
Opel Vivaro
Peugeot Expert
Toyota ProAce

MP-0614



IVECO Daily
Only for round chassis

MP-1018



Mercedes Sprinter

MP-1314



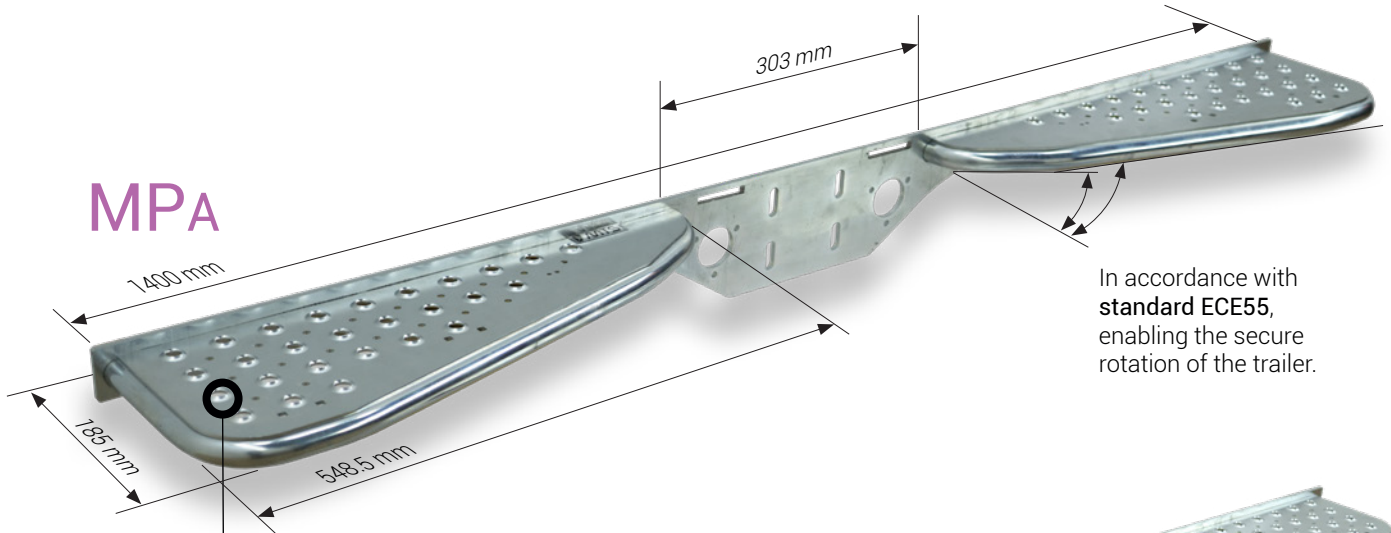
Fiat Talento
Nissan NV300
Nissan Primastar (2022)
Renault Trafic

Fixed to tow bar

MPA & MPA_R

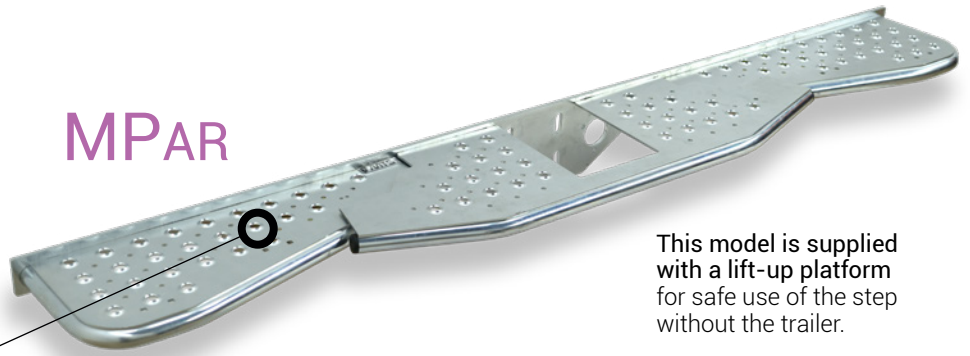


Can be fitted to the principal types of tow bar.



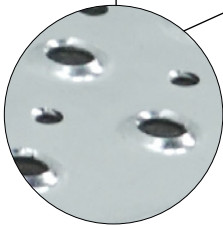
MPA

In accordance with **standard ECE55**, enabling the secure rotation of the trailer.

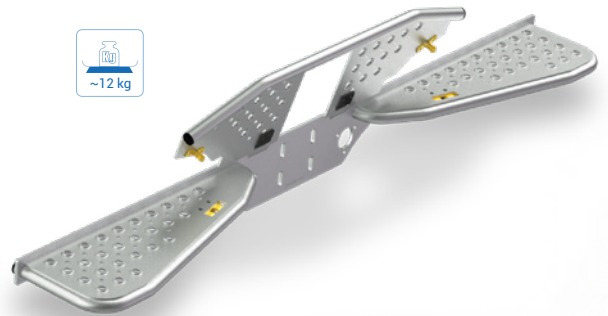


MPA_R

This model is supplied with a lift-up platform for safe use of the step without the trailer.

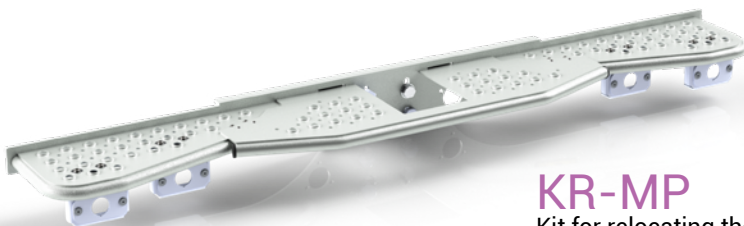


Perforations create an anti-slip surface and remove mud.



The platform clips onto the step and automatically locks in position.

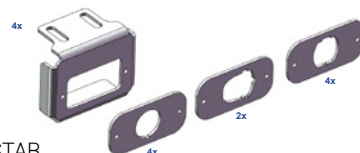
It can be purchased separately.



KR-MP

Kit for relocating the parking aid sensors

Only for: MASTER, INTERSTAR, BOXER, JUMPER, MOVANO and DUCATO.

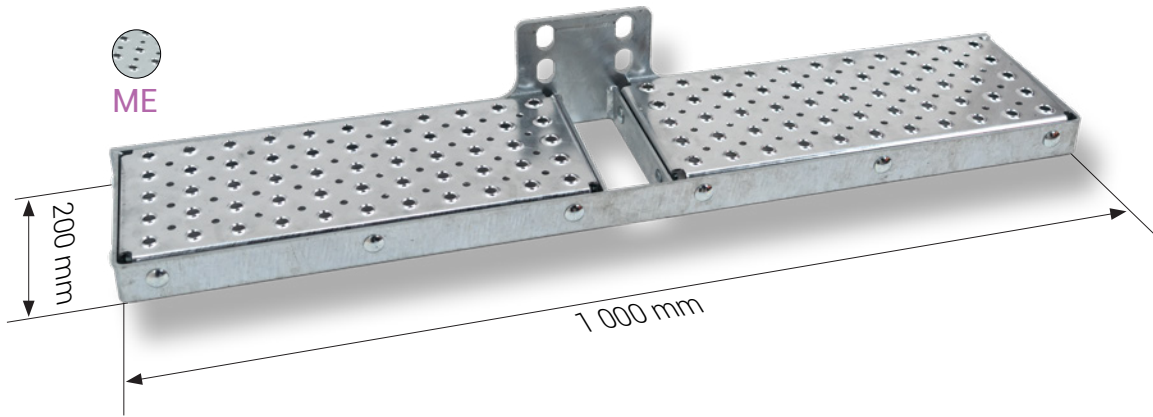


Fixed to tow bar

MPA100



Can be fitted to the principal types of tow bar.



This galvanised-steel step is suitable for vehicles equipped with a tow bar and without a step integrated into the bumper.

- Platform 860 x 200 mm
- Structure and steps in galvanised steel
- Load capacity of 200 kg

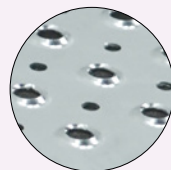


The 3 types of non-slip surfaces available for the models MPRRG, MPA100 and MPLL.



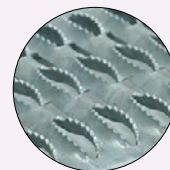
SO - Soft

Surface composed of 106 anti-slip rubber pads, designed for use on hard ground that is not muddy.



ME - Medium

Standard MTS non-slip surface enabling versatile use.



GR - Grip

Ultra-high-grip surface for all-terrain use.

Lift-up step for sliding door MPLL



New

This new galvanised-steel step is fixed inside the vehicle, to the floor, on the sliding-door side. You only need to use one hand to deploy it.



MPLL deployed



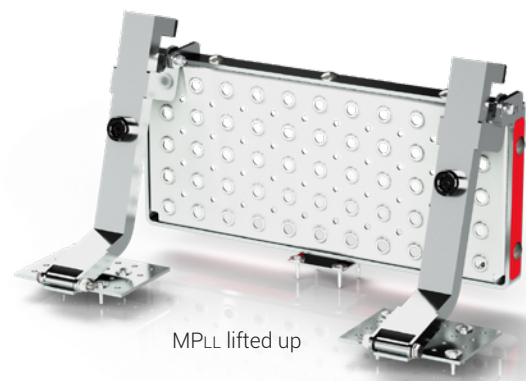
Warning: requires the floor to be drilled.

- Platform 430 x 200 mm
- Structure and step in galvanised steel
- Load capacity of 150 kg



SO ME GR

See the different types of anti-slip surfaces on page 5.



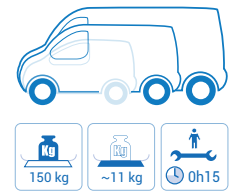
MPLL lifted up



MPLL lifted up inside the vehicle (Demo version, not fixed in place)

Fixed to tow bar

MPU & MPU_G



MPU

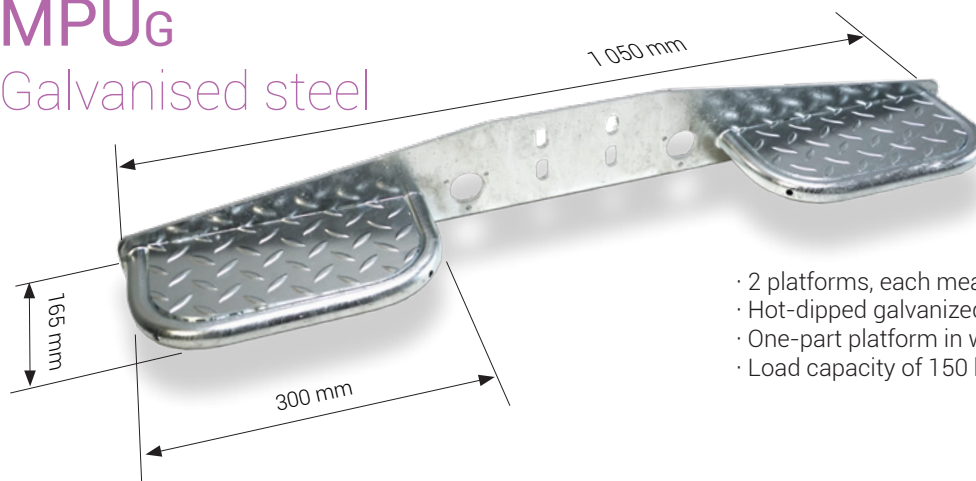
Steel painted black



- 2 platforms, each measuring 300 x 165 mm
- Steel structure painted black
- One-part platform in welded steel
- Load capacity of 150 kg

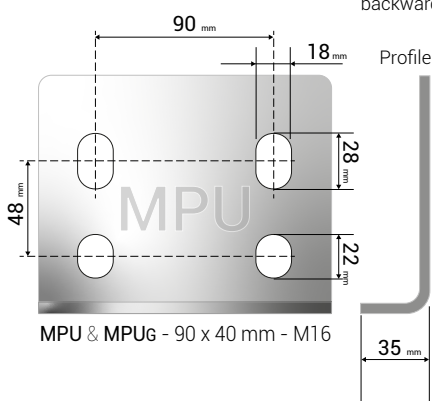
MPU_G

Galvanised steel



- 2 platforms, each measuring 300 x 165 mm
- Hot-dipped galvanized steel
- One-part platform in welded steel
- Load capacity of 150 kg

Tow-bar plate



Technical data



	MPRRg	MP	MPA	MPAR	MPA100	MPLL	MPU
Dimensions							
Length	900 or 600 mm	1 300 mm	1 400 mm	1 400 mm	1000 mm	420 mm	1 013 mm
Depth	200 mm	200 mm	185 mm	185 mm	200 mm	200 mm	200 mm
Material	Galvanised steel	Galvanised steel	Galvanised steel	Galvanised steel	Galvanised steel	Galvanised steel	Galvanised steel
Load capacity	150 kg	200 kg	200 kg	200 kg	200 kg	150 kg	150 kg
Fitting and tow-bar plate	Fitting without tow-bar with vehicle-specific brackets	Fitting without tow-bar with vehicle-specific brackets	Fixed to tow bar	Fixed to tow bar	Fixed to tow bar	Inside vehicle on one side (drilling required)	Fixed to tow bar

Citroën	Jumpy Jumper	-	-	MP-0116	○	□	○	□	●	◐	○	□	○	□	●	◐
		-	MPRRG-0110	MP-0110	●	▲	●	▲	●	◐	○	□	○	□	●	◐
Fiat	Scudo Talento Ducato	-	-	MP-0116	○	□	○	□	●	◐	○	□	○	□	●	◐
		-	-	MP-1314	●	▲	●	▲	●	◐	○	□	○	□	●	◐
		-	MPRRG-0110	MP-0110	●	▲	●	▲	●	◐	○	□	○	□	●	◐
Ford	Custom Transit 2T	-	-	MP-0410	●	▲	●	▲	●	◐	○	□	○	□	●	◐
		-	MPRRG-0430	MP-0430	●	▲	●	▲	●	◐	○	□	○	□	●	◐
Hyundai	H350	-	-	MP-2017	○	□	○	□	●	◐	○	□	○	□	●	◐
IVECO	Daily (round frame, except 19 m³)	-	-	MP-0614	●	▲	●	▲	○	□	○	□	○	□	○	□
MAN	TGE	-	-	MP-2017	●	▲	●	▲	●	◐	○	□	○	□	●	◐
Mercedes	Vito Sprinter	-	-	-	○	□	○	□	○	□	○	□	○	□	○	□
		-	-	MP-1018	●	▲	●	▲	●	◐	○	□	○	□	●	◐
Nissan	NV300 - Primastar NV400 - Interstar	-	-	MP-1314	●	▲	●	▲	●	◐	○	□	○	□	●	◐
		-	MPRRG-1609	MP-1609	●	▲	●	▲	●	◐	○	□	○	□	●	◐
Opel	Vivaro Vivaro (old version) Movano Movano (old version)	-	-	MP-0116	○	□	○	□	●	◐	○	□	○	□	●	◐
		-	-	MP-1314	●	▲	●	▲	●	◐	○	□	○	□	●	◐
		-	MPRRG-0110	MP-0110	●	▲	●	▲	●	◐	○	□	○	□	●	◐
		-	MPRRG-1609	MP-1609	●	▲	●	▲	●	◐	○	□	○	□	●	◐
Peugeot	Expert Boxer	-	-	MP-0116	○	□	○	□	●	◐	○	□	○	□	●	◐
		-	MPRRG-0110	MP-0110	●	▲	●	▲	●	◐	○	□	○	□	●	◐
Renault	Trafic Master	-	-	MP-1314	●	▲	●	▲	●	◐	○	□	○	□	●	◐
		-	MPRRG-1609	MP-1609	●	▲	●	▲	●	◐	○	□	○	□	●	◐
Toyota	ProAce	-	-	MP-0116	○	□	○	□	●	◐	○	□	○	□	●	◐
Volkswagen	Crafter	-	-	MP-2017	●	▲	●	▲	●	◐	○	□	○	□	●	◐

Without parking aid sensors

- Compatible
- Not compatible

With parking aid sensors

- ◐ Compatible
- ◑ Compatible if sensors hidden or disconnected
- Not compatible
- ▲ Compatible if installation of the set for relocating the parking aid sensors (KR-MP - 136970)